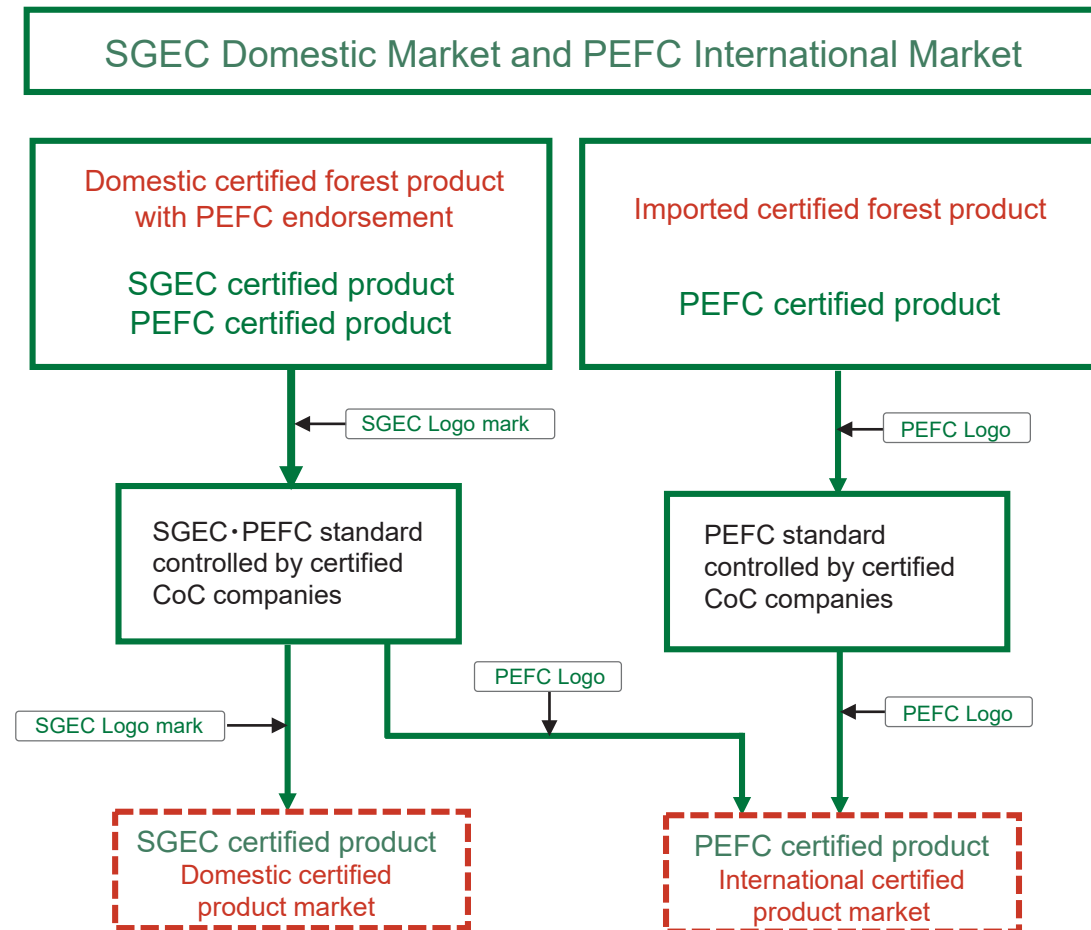


## Consumer Confidence and Commitment to Environmental Protection

Through SGEC forest certification, access to the both SGEC domestic market and PEFC international market is made possible.



**Note:** Forest products originated from domestic SGEC certified forests with PEFC endorsement are regarded as fulfilling requirements for both SGEC and PEFC certification. SGEC certified products are controlled using SGEC logo marks in the domestic market, while PEFC certified products are controlled using PEFC logos in the international market.

Please send an application for SGEC or PEFC certification to a notified accredited certification body listed on the website of Sustainable Green Ecosystem Council (SGEC) (<http://www.sgec-eco.org>).

Published by  
Sustainable Green Ecosystem Council  
<http://www.sgec-eco.org>

Address: Nagata-cho Building 4th Floor, 2-4-3  
Nagata-cho Chiyoda-ku Tokyo, 100-0014 Japan  
PHONE: +81-3-6273-3358 FAX: +81-3-6273-3368  
e-mail: [info@sgec-eco.org](mailto:info@sgec-eco.org)

# SGEC Internationally Recognized Forest Certification Scheme

~Pursuing Development of Renewable Resource-based Society through Sustainable Forest Management~

## Dissemination and widespread use of certified forest products

Our aspiration is that environmentally-friendly certified forest products are disseminated and widely used in our society through, for example, their expanding use in the public construction such as stadiums and facilities of Tokyo Olympics/Paralympics and National Sports Festival. This will enable us to hand down Japanese "culture of wood" to the next generation and promote "appropriate forest conservation and utilization".



## Realization of sustainable forest management through SGEC Internationally Recognized Forest Certification Scheme

### ● Seven Standards of Sustainable Green Ecosystem Council

The purpose of SGEC Forest Certification Scheme is, on the basis of the Montreal Process, to realize sustainable forest management by which ecological, economic and social functions of forest, including labor safety and respect for customary rights or other aspects relating to local and indigenous people (Ainu people), are maintained in accordance with natural and social conditions in Japan.

- Standard 1: Identification of Forests and Establishment of their Management Policies
- Standard 2: Conservation of Biological Diversity
- Standard 3: Conservation and Maintenance of Soil and Water Resources
- Standard 4: Maintenance of Productivity and Health of Forest Ecosystem
- Standard 5: Legal and Institutional Framework for Sustainable Forest Management
- Standard 6: Maintenance and Promotion of Social and Economic Benefits
- Standard 7: Monitoring and Information Disclosure

### ◇ Montreal Process

Montreal Process is an international initiative to develop scientifically reliable "criteria and indicators" by which sustainability of forest management can be measured and evaluated objectively. Twelve countries in boreal or temperate zone including Japan, the United States, Russia, Canada, China have been participating the process.

《 to protect our forests 》



### ● Four Principles for Management of SGEC Forest Certification

1. To be based on sustainable forest management
2. To secure credibility
3. To fulfil accountability
4. To ensure adaptability and diversity

### ● SGEC Forest Certification is a third-party certification

SGEC forests are certified by third-party certification bodies accredited by accreditation bodies based on the ISO international standards.

### ◇ SGEC

Sustainable Green Ecosystem Council was established as the domestic certification scheme in 2003, and newly launched as an internationally recognized certification scheme with endorsement by the PEFC Council in 2016.

### ◇ PEFC

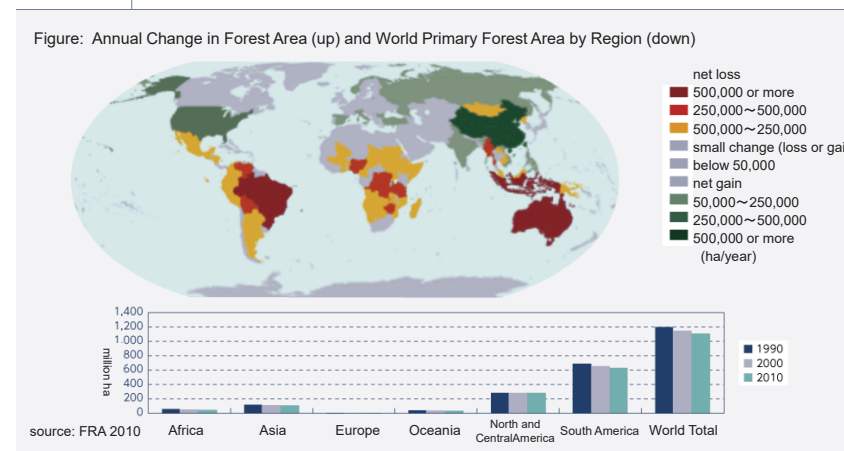
Programme for the Endorsement of Forest Certification Schemes was established in 1999 (renamed in 2003) as an organization endorsing national level certification schemes in different countries, and is the international certification scheme which has the largest area of certified forests. (Headquarters in Switzerland)



## Why SGEC Internationally Recognized Certification Scheme is necessary for everybody?

### Depletion of Global Forest Resources and Environmental Destruction

Forests produce air (oxygen), store water, create soil and nurture many kinds of living things. If forests are destroyed, terrestrial animals cannot survive. A large part of global forests has been already lost because of excessive development and cutting. (see the figure below)  
In order to prevent further depletion of forest resources, sustainable forest management should be promoted worldwide. SGEC and PEFC, as certification schemes recognized globally, are key players for the promotion of sustainable forest management.



### Japan is a "Country of Forest"

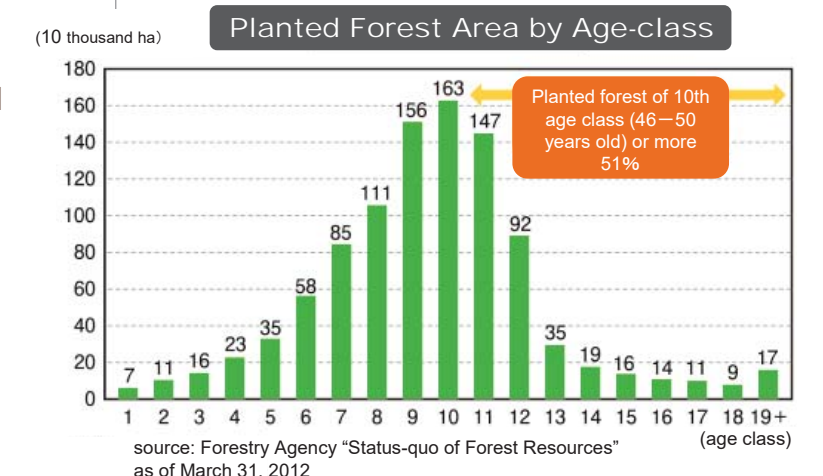
Japan is a "Country of Forest" in which forests occupy around 70% of the total land area. How to fulfil various functions of the forests and how to make use of rich forest resources are crucial challenges for Japan's future.

Importance of conservation and utilization of forests

### Japan's forests are coming to age of maturity.

Planted forests account for about 40% of total forest area and 60% of total growing stock in Japan. Many of those planted forests are now coming to age of maturity and harvesting. It is important and timely to promote development of diverse forests in accordance with local conditions and needs through appropriate utilization and conservation of forests.

### Necessity for utilization of certified forest products

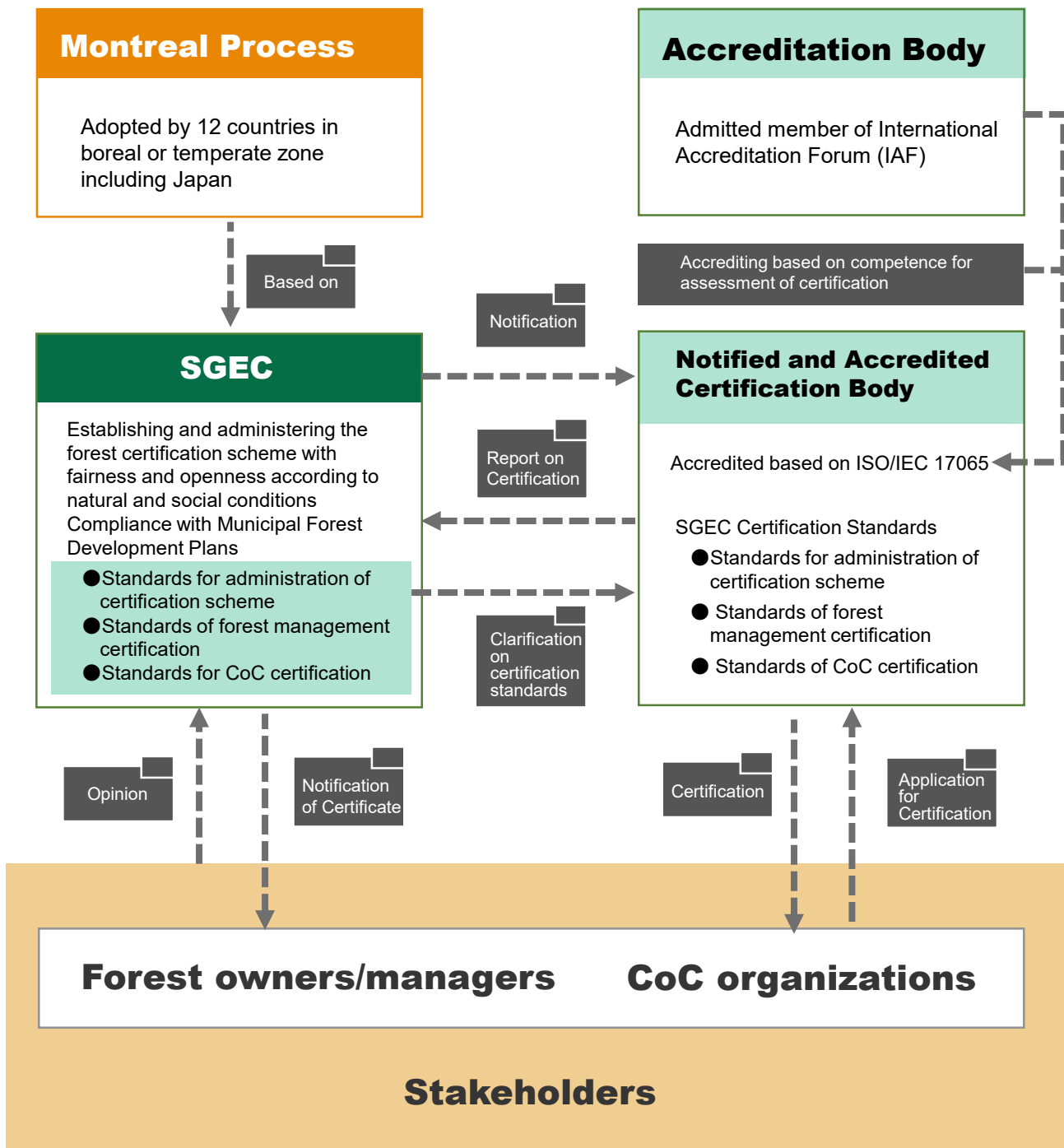


Note 1) Age-classes are divided by 5 year-period steps. "Age-class 1" includes the 1st to 5th year after plantation with the year of plantation counted as the 1st year.  
2) The forest area is defined as the area subject to forest management plans based on Article 5 and 7-2 of Forest Act.

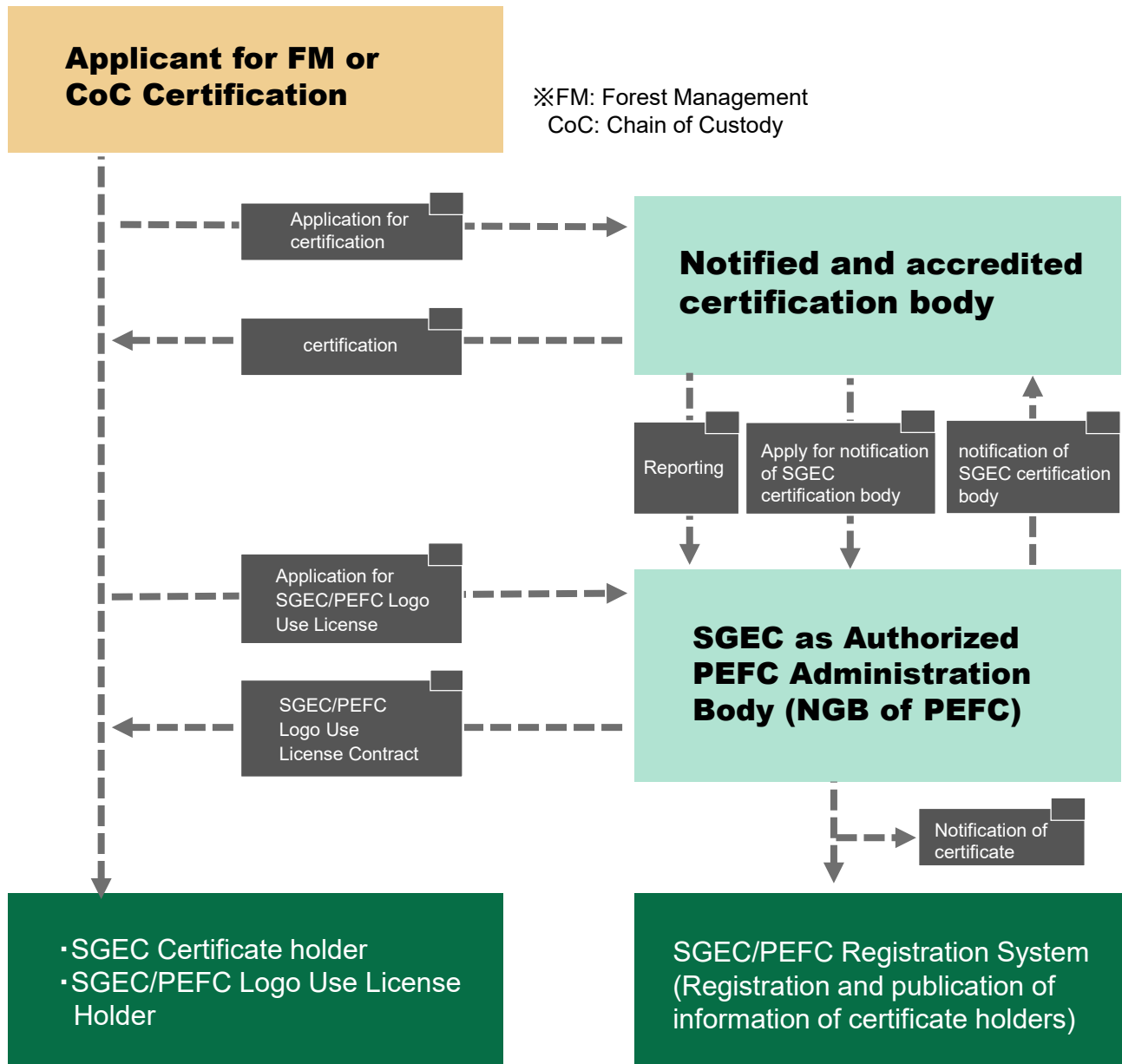
Necessity of Utilization of Domestic Wood Products

# Outline of SGEC Forest Certification Scheme

SGEC Certification Scheme is managed by three different categories of organizations which are thoroughly independent each other: SGEC as the scheme owner in charge of formulation of the certification standards, certification bodies and accreditation bodies. Accreditation bodies which are members of International Accreditation Forum (IAF) accredit certification bodies based on strict evaluation on their capability, qualification, independence, etc., and the accredited certification bodies verify with rigorous surveillance that certification holders such as forest owners/managers or manufacturers/distributors of forest products and paper products comply with requirements of the SGEC forest certification standards formulated on the basis of the Montreal Process.



# How to acquire SGEC Certificates or SGEC/PEFC Logo Use Licenses



## PEFC National Governing Body (NGB):

SGEC, as the National Governing Body in Japan, performs PEFC administration on behalf of the PEFC Council on a contract basis.

## Logo Mark License:

SGEC certificate holders are able to acquire both a SGEC Logo Mark License and a PEFC Logo Use License.

However, a SGEC Logo Mark License cannot be issued for imported PEFC certified products.